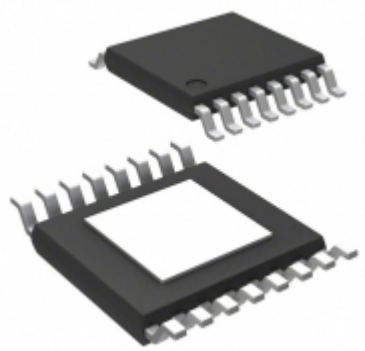


DRV8833PWP



Part Number: [DRV8833PWP](#)
Manufacturer: [Luminary Micro / Texas Instruments](#)
Description: IC MOTOR DRIVER PAR 16HTSSOP
Data sheet: [DRV8833 Datasheet](#)

RoHS Status: Lead free / RoHS Compliant
Ship From: Hong Kong
Shipment Way: DHL/Fedex/TNT/UPS/EMS

Images are for reference only.
 See Product Specifications for product details.
 Buy DRV8833PWP with confidence from Components-Store.com, 1 Year Warranty

[Request For Quotation](#)

PRODUCT PARAMETER

Part Number	DRV8833PWP
Manufacturer	Luminary Micro / Texas Instruments
Description	IC MOTOR DRIVER PAR 16HTSSOP
Lead Free Status / RoHS Status	Lead free / RoHS Compliant
Quantity Available	68614 pcs
Product Photo	DRV8833PWP.jpg
Category	Integrated Circuits (ICs)
Voltage - Supply	2.7 V ~ 10.8 V
Voltage - Load	2.7 V ~ 10.8 V
Technology	NMOS
Supplier Device Package	16-HTSSOP
Series	-
Rds On (Typ)	160 mOhm LS, 200 mOhm HS
Packaging	Tube
Package / Case	16-TSSOP (0.173", 4.40mm Width) Exposed Pad
Output Configuration	Half Bridge (4)
Other Names	296-29394-5
Operating Temperature	-40°C ~ 150°C (TJ)
Mounting Type	Surface Mount
Moisture Sensitivity Level (MSL)	3 (168 Hours)
Load Type	Inductive
Lead Free Status / RoHS Status	Lead free / RoHS Compliant
Interface	PWM
Features	Status Flag
Fault Protection	Current Limiting, Over Temperature, Short Circuit, UVLO
Detailed Description	Half Bridge (4) Driver DC Motors, General Purpose, Solenoids, Stepper Motors NMOS 16-HTSSOP
Current - Peak Output	2A
Current - Output / Channel	1.5A
Base Part Number	DRV8833
Applications	DC Motors, General Purpose, Solenoids, Stepper Motors

Components-Store.com is a Reliable Stocking Distributor of Electronic Components. We specialize in all Luminary Micro / Texas Instruments series electronic components. We have 68614 pieces of Luminary Micro / Texas Instruments DRV8833PWP in stock available now. Request a quote from electronics components distributor at Components-Store.com, our sales team will contact you within 24 hours.

RFQ Email: info@Components-Store.com

RELATED PRODUCTS

	Part#: DRV8833CRTER Description: IC MOTOR DRIVER	Manufacturers: Luminary Micro / Texas Instruments In Stock: 63773	RFQ
	Part#: DRV8832QDQGRQ1 Description: IC MOTOR DRIVER PAR 10-MSOP	Manufacturers: Luminary Micro / Texas Instruments In Stock: 86868	RFQ
	Part#: DRV8833RTYT Description: IC MOTOR DRIVER PAR 16QFN	Manufacturers: Luminary Micro / Texas Instruments In Stock: 47852	RFQ
	Part#: DRV8834EVM Description: EVAL MODULE FOR DRV8834	Manufacturers: Luminary Micro / Texas Instruments In Stock: 895	RFQ
	Part#: DRV8832EVM Description: EVAL MODULE FOR DRV8832	Manufacturers: Luminary Micro / Texas Instruments In Stock: 1699	RFQ
	Part#: DRV8834RGET Description: IC MOTOR DRIVER PAR 24VQFN	Manufacturers: Luminary Micro / Texas Instruments In Stock: 64912	RFQ
	Part#: DRV8833PW Description: IC MOTOR DRIVER PAR 16-TSSOP	Manufacturers: Luminary Micro / Texas Instruments In Stock: 44458	RFQ
	Part#: DRV8835DSSR Description: IC MOTOR DRIVER PAR 12WSOP	Manufacturers: Luminary Micro / Texas Instruments In Stock: 75277	RFQ
	Part#: DRV8833CPWP Description: DUAL H-BRIDGE MOTOR DRIVER	Manufacturers: Luminary Micro / Texas Instruments In Stock: 67138	RFQ
	Part#: DRV8834RGER Description: IC MOTOR DRIVER PAR 24VQFN	Manufacturers: Luminary Micro / Texas Instruments In Stock: 87004	RFQ
	Part#: DRV8833PWPR Description: IC MOTOR DRIVER PAR 16HTSSOP	Manufacturers: Luminary Micro / Texas Instruments In Stock: 65612	RFQ
	Part#: DRV8834PWPR Description: IC MOTOR DRIVER PAR 24HTSSOP	Manufacturers: Luminary Micro / Texas Instruments In Stock: 65424	RFQ
	Part#: DRV8833CEVM Description: EVAL BOARD FOR DRV8833C	Manufacturers: Luminary Micro / Texas Instruments In Stock: 1921	RFQ
	Part#: DRV8833CPWPR Description: IC MOTOR DRIVER PAR	Manufacturers: Luminary Micro / Texas Instruments In Stock: 65985	RFQ
	Part#: DRV8833CRTEET Description: IC MOTOR DRIVER 1A 16WQFN	Manufacturers: Luminary Micro / Texas Instruments In Stock: 65168	RFQ
	Part#: DRV8833PWR Description: IC MOTOR DRIVER PAR 16-TSSOP	Manufacturers: Luminary Micro / Texas Instruments In Stock: 73222	RFQ
	Part#: DRV8834PWP Description: IC MOTOR DRIVER PAR 24HTSSOP	Manufacturers: Luminary Micro / Texas Instruments In Stock: 61013	RFQ
	Part#: DRV8832QDQGQ1 Description: IC MOTOR DRIVER PAR 10-MSOP	Manufacturers: Luminary Micro / Texas Instruments In Stock: 42967	RFQ
	Part#: DRV8833RTYR Description: IC MOTOR DRIVER PAR 16QFN	Manufacturers: Luminary Micro / Texas Instruments In Stock: 88461	RFQ
	Part#: DRV8833EVM Description: EVAL MODULE FOR DRV8833	Manufacturers: Luminary Micro / Texas Instruments In Stock: 1997	RFQ

Related keywords for DRV8833PWP

Luminary Micro / Texas Instruments DRV8833PWP	DRV8833PWP distributor	DRV8833PWP supplier	DRV8833PWP price
DRV8833PWP download datasheet	DRV8833PWP datasheet	DRV8833PWP stock	buy DRV8833PWP

